

IRIS Process Live

Bring your enterprise software processes to life



IRIS Process Live is a second-generation enactment system that enables teams to execute process-aware development projects in Visual Studio Team System® and obtain detailed measurements of their effectiveness to ensure the organization is able to meet its governance objectives. IRIS Process Live is methodology neutral, allowing organizations to utilize the best industry content with their own proven practices and deploy a rich set of processes and best practices throughout the organization.

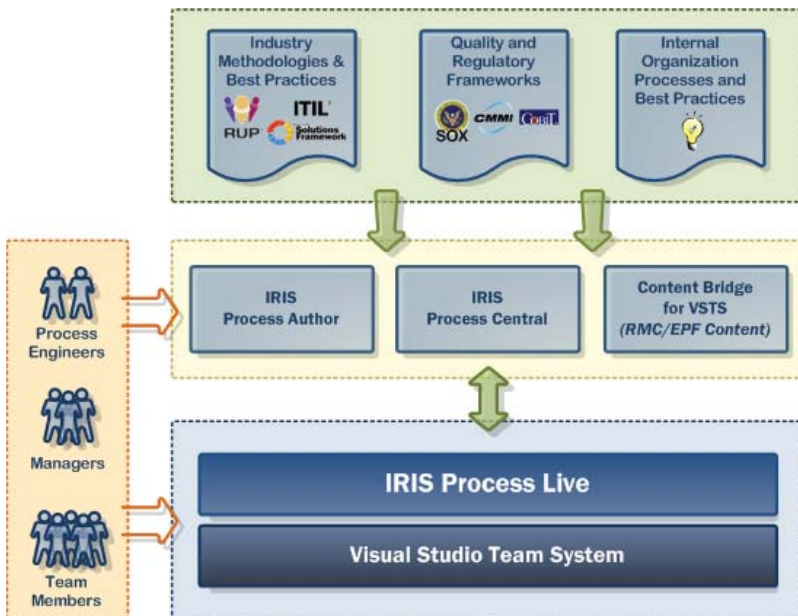
Taking advantage of built-in support for governance frameworks and process element instantiation, team members can quickly and easily create work items, work item relationships, and reports to facilitate data rollup and transparency in the organization. The system's workflow and notification engine leverages work item relationships to automate state changes and inform team members of their current and affected work items. Lessons learned and other process feedback are collected and made available to process engineers for process improvement initiatives.

Process Instantiation and Work Item Creation

Process selection wizard: The process selection wizard allows managers and team members to explore process definitions before selecting them for their project. The wizard provides easy access to process guidance, recommendations, blogs entries, and other feedback in a central location to help ensure the right process definition is selected for the project.

Multiple process definition support: IRIS Process Live enables the use of multiple process definitions in a single project. Process definitions can be added or removed from the project at any time so team members are not restricted to a single definition for the entire duration of the project.

Intuitive process instantiation wizard: The instantiation wizard allows team members to select which process activities and related work products should be instantiated as work items. Instantiation can be performed during project creation or execution; effectively eliminating the need to repetitively create



numerous tasks manually for each project.

Automatic work item linking: Relationships between process elements and work items are automatically created by the instantiation wizard using the relationship types defined in the process definition. For example, an activity work item instance could be automatically linked to its predecessor and successor work items as well as its input and output work product work items.

Project Execution

Frictionless access to the right process content: Team members are provided with relevant process content as they need it, no longer inconvenienced by sifting through volumes of online process documentation.

Work-flow intelligence: IRIS Process Live automatically triggers work item state changes and sends notifications based on configurable work-flow relationships making it easier for team members to follow the process definitions. Work-flow intelligence can be enabled for process work items as well as custom work items.

Helpful project notifications: Team members are automatically notified when work items are modified using IRIS Process Live's configurable notification rules and templates.

Process modification: Work items and their relationships may be modified at any time during project execution to modify the process and its work-flow.

Process Improvement and Governance

Apply valuable metrics against real process usage:

By enacting process-aware projects, metrics can be applied over multiple projects to provide an in-depth understanding of process usage trends. For example, the repeated creation of new tasks or bypassing of planned tasks within a particular phase or iteration may illuminate areas in need of improvement.

Analyse process compliance: A process definition may capture what is required to meet quality and governance objectives, but IRIS Process Live lets you track and report your actual compliance on-demand through built-in reports. Predefined reports are provided for COBIT, CMMI, and process deviation.

Refine organization's set of processes: Managers and other team members can easily provide context sensitive feedback on the process definitions during project execution as work item instances or process guidance wiki modifications.

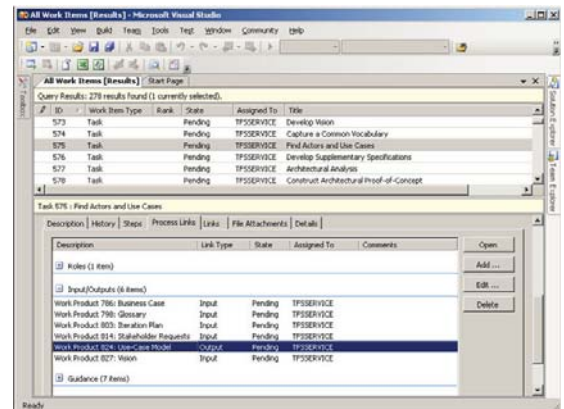
Round-trip feedback: Feedback registered with IRIS Process Live is automatically made available to process authors directly in IRIS Process Author.

Find Out More

To obtain an obligation-free demonstration of **IRIS Process Live** or for additional product information, contact Osellus or visit www.osellus.com.

About Osellus

Osellus is a leading provider of process improvement and automation solutions for the software development industry. Osellus helps software development organizations select, enhance, model and automate the underlying processes that support their application development efforts. By adopting a process-centric development model, Osellus customers are better positioned to meet time-to-market, quality and cost objectives.



1-866-osellus
www.osellus.com
info@osellus.com

144 Front Street West
Suite 750
Toronto, Ontario
M5J 2L7 CANADA
Tel: (416) 603-6667
Fax: (416) 203-6000

10th Floor, 99/25 Moo 4
Chaengwattana Road
Klong Gleua, Pakkred,
Nonthaburi 11120 THAILAND
Tel: (662) 964-9810
Fax: (662) 962-2513